

# Designed TO KILL

## Johnson Production Group Press Kit

---

### One-Liner

When the runway becomes a deadly place...

### Synopsis

After New York fashion photographer Jennifer Higgins suffers a violent psychotic breakdown, she flees to Los Angeles where she starts teaching a class called "Fashion and Photography" at a local high school. Jennifer sees potential in a nerdish student, David, and does a makeover on him, transforming him into a gorgeous runway model. Overnight, David matures into not only the hottest guy on campus, but Jennifer's obsessive crush. When campus sexpot Brittany tries to claim David as her own, Jennifer is driven to homicidal madness, secretly killing Brittany. However Jennifer realizes that other women in David's life -- his agent, his shy girlfriend -- are also obstacles, and they too must be eliminated. Jennifer ultimately seduces David into sleeping with her, and at first the naive David is convinced he has discovered true love; but he quickly discovers he has fallen into the bed of a homicidal psychopath. When David rejects Jennifer, she goes berserk and captures him, intending to mutilate his good looks. Now it's up to David's girlfriend to rescue him before the crazy artist Jennifer destroys her beautiful creation.

### Producers

Executive Producer  
TIMOTHY O. JOHNSON

Producer  
ROBERT BALLO

Producer  
MARIANNE C. WUNCH

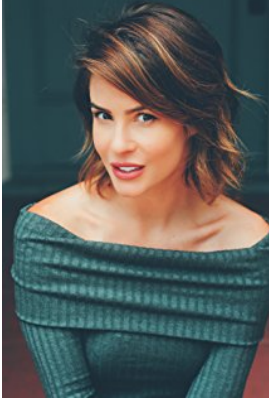
Line Producer  
DAN GOLDEN

### Key Cast

<u>CHARACTER</u>	<u>ACTOR</u>
Jennifer	LINSEY GODFREY
David	JOSHUA HOFFMAN
Caitlyn	ELLEN MICHELLE MONOHAN

## Key Cast Biographies

### LINSEY GODFREY



Born and raised in Stuart, Florida, Godfrey started acting in high school and was quickly signed up by a talent agency. In 2005, she moved to Los Angeles to try her luck auditioning. One of her first parts was a recurring role on the TV show *Surface* (2005). Godfrey's career came to a sudden halt when she was diagnosed with Hodgkin's lymphoma in 2006. While cancer treatment was eventually successful, the therapy lasted seven months. Afterwards Godfrey returned to L.A. and scored guest roles on such shows like *Cold Case* (2003) and *CSI: Miami* (2002). Her big break didn't come until 2012 though when she scored the prestigious role of Caroline Spencer on the daytime drama *The Bold and the Beautiful* (1987). Tragedy struck again as the actress was injured in an automobile accident on February 2, 2015, after being struck by a moving car while walking on the sidewalk in Los Angeles. The real-life events were later incorporated into the series as her character experienced the same accident (off-screen). From 2013 to 2015 Godfrey was in a relationship with and engaged to fellow actor Robert Adamson who plays Noah Newman on sister-show *The Young and the Restless* (1973). They share a daughter, born in 2014.

### JOSHUA HOFFMAN



Joshua Hoffman is an actor, known for *Code Black* (2015), *Criminal Minds* (2005) and *Shameless* (2011). ELLEN MICHELLE MONOHAN

### ELLEN MICHELLE MONOHAN



Ellen Michelle Monohan grew up in Louisville, Ky with her parents, younger sister and brother. She graduated with a BFA in acting from Loyola University Chicago. She moved to Los Angeles right after graduation where she got her start. Ellen now resides in both New York and Los Angeles acting and modeling.

## Production Credits

### Full Cast

<b>Actors</b>	<b>Role</b>
LINSEY GODFREY	Jennifer
JOSHUA HOFFMAN	David
JAMIE LUNER	Suzanne
ELLEN MICHELLE MONOHAN	Caitlyn
MARIA PALLAS	Andrea
STEVIE JOHNSON	Principal Wilson
ZACHARY ROOZEN	Trey
HEATHER HOPKINS	Brittany
PAUL TOWEH	Greg
TJ HOBAN	Nick
GINA HIRAIZUMI	TV Reporter
SHANE RAM	Sergio
DIANA POPICK	Female Client
MICHAEL FILIPPI	Kevin

### Produced by

Timothy O. Johnson	executive producer
Marianne C. Wunch	associate producer
Robert Ballo	producer
Dan Golden	line producer

### Directed by

Doug Campbell

### Story by

Doug Campbell

### Screenplay by

David Chester

### Music by

Marc Jovani

### Sound Design by

Andres Boulton

**Cinematography by**

David Dolnik

**Film Editing by**

Thijs Bazelmans

**Casting By**

Jeff Hardwick, CSA

**Production Design by**

Jade Spiers

**Costume Design by**

Bob Miller

Steve Trevor

**Crew**

First Assistant Director	Ted Campbell
Second Assistant Director	Hui Waisum
2nd Second Assistant Director	Ian Kronenberg
Script Supervisor	April McQuarrie
Camera Operators	James Markham Hall, Jr. John Rhode
A Camera First Assistants	Ian Blake Chris Chrisenberg
B Camera First Assistants	Christopher Jordan Owen Patry Woody Ray
Camera Second Assistants	Carissa Rose Miranda Sierra Harbison Melissa Kirchhoff Rudy Pesci
Media Manager	Duke de Castro

Still Photographer	David Goldner
Stills Assistant	Sarah Estrada
Production Sound Mixers	Cameron Selan
	Jacob Nerstheimer
Boom Operator	Jonathon Freeman-Anderson
Gaffer	Bailey Clark
Best Boy Electrics	Ian Cawley
	Chuck Pappas
	Zachary Perez
Key Grip	Bevis Tran
Best Boy Grip	Robert Julin
G&E Swing	Kyle Thor
Art Director	Nicholas Delgado
Set Dressers	Ray Ho
	Jake Miller
Art Department Swings	Julian Velazquez
	Katia Badalian
	Mollie Wartelle
	Kate Wydeven
	Luke Hanlein
Art Department Assistant	Steele O' Neal
Key Makeup Artist	Lauren Nicole
Key Hairstylist	Maria Coca
Locations Manager	Tyler McGraw
Production Accountant	Doerte Linder

Extras Casting Director                      Morgue N. Marcus  
Little Bird Casting

Key Set Production Assistants              Denzel John  
  
Blake Carr

Transportation Production Assistant      Ian Kronenberg

Production Assistants                      Sasha Wulf  
  
Ramon Acevedo  
  
Jaden Garness  
  
Brandon Brown  
  
Jordan Dominguez  
  
Jordan Miller

Craft Service                                  Stephanie Dyer

Caterer    Lori Grigg  
Lori's Kitchen

**Second Unit**

Directors                                        David Benullo  
  
John Rhode

Directors of Photography                    James Markham Hall, Jr.  
  
John Rhode

Production Sound Mixer                    Darryl Williams

**Post Production**

Supervising Sound Editor/  
Re-recording Mixer                        Andres Boulton

Sound Effects Editor                        Craig Polding

Foley Mixer/Editor                         Ryan Villareal

Foley Artist	Steve Walter
Additional Music	William Hoshal Miguel Bezanilla Luigi Giraldo
Visual Effects Artists	Yonah Nimmer Ron Boscacci
Visual Effects Assistant	Max Krone
Post Production Services	Blueprint Post Production
Colorist	Randy Coonfield
Online Editor	Mark Fletcher
Footage used under license from Contributors	Shutterstock.com VIA films VideoFort LynnMedia ymgerman aurquijofilms
Additional Stock Footage	Shadowland
Stock Images	Songquan Deng/Shutterstock.com tomertu/Shutterstock.com Dimitry Bruskov/Shutterstock.com dugdax/Shutterstock.com hallojulie/Shutterstock.com
Script Clearance	Dennis Whitcomb Hollywood Script Research
Grip and Lighting Equipment	Brilliant Screen Studios
Camera Equipment	GOAL Productions

## Producer Biographies

### **TIM JOHNSON** – Executive Producer

Tim Johnson is among the most active and reliable producers in the business thanks to top rate productions and an 'on time, on budget' reputation. Previously, he managed the production of ABC's THE DAYS (MINDSHARE/TOUCHTONE.) Prior to forming Johnson Production Group and Ignite Entertainment, Tim served as Head of West Coast Programming Executive and launched the successful series DOC (88 episodes,) SUE THOMAS, FBI, MYSTERIOUS WAYS, JUST CAUSE, PONDEROSA, CHRISTY, ITS A MIRACLE AND MIRACLE PETS.

Johnson is also responsible for producing the international hit series, DR. QUINN, MEDICINE WOMAN for CBS PRODS/SULLIVAN COMPANY for over 5 seasons. During his 100-episode tenure, he also launched LIVE FROM THE RANCH with Orson Bean - a nationally syndicated talk show focusing on family values in America. He also developed and produced the original docu-drama COLD CASE for CBS network, which was the very first program to integrate television with the Internet.

#### Recent Projects:

Eat, Play, Love – Executive Producer  
Sleepwalking in Suburbia – Executive Producer  
The Stalker Club – Executive Producer  
Infidelity in Suburbia – Executive Producer  
Hunter's Cove – Executive Producer  
Double Mommy – Executive Producer  
Hearts of Christmas – Executive Producer  
The Rooftop Christmas Tree – Executive Producer  
A Snow Capped Christmas – Executive Producer  
A December Bride – Executive Producer  
The Mistletoe Promise – Executive Producer  
Stalked by My Mother – Executive Producer  
Stalked by My Doctor: The Return – Executive Producer  
Backstabbed – Executive Producer  
The Convenient Groom – Executive Producer  
Killer Coach – Executive Producer  
Tulips in Spring – Executive Producer  
Hearts of Spring – Executive Producer



Stalked by My Doctor – Executive Producer  
Becoming Santa – Executive Producer  
Magic Stocking – Executive Producer  
Just in Time for Christmas – Executive Producer  
A Gift Wrapped Christmas – Executive Producer  
A Mother's Instinct – Executive Producer  
Ice Sculpture Christmas – Executive Producer  
The Reckoning – Executive Producer  
Bad Sister – Executive Producer  
Family for Christmas – Executive Producer  
Double Daddy – Executive Producer  
Her Infidelity – Executive Producer  
Stalked by My Neighbor – Executive Producer  
Babysitter's Black Book – Executive Producer  
A Gift of Miracles – Executive Producer  
Strange Empire – Executive Producer  
Sugar Daddies – Executive Producer  
Paper Angels – Executive Producer  
A Cookie Cutter Christmas – Executive Producer  
Stranded in Paradise For Better or For Worse – Executive Producer  
Baby Bootcamp – Executive Producer  
Ring By Spring – Executive Producer  
Sole Custody – Executive Producer  
The Cheating Pact – Executive Producer  
Deadly Spa – Executive Producer  
Walking the Halls – Executive Producer  
June In January – Executive Producer  
Christmas in the City – Executive Producer  
Snow Bride – Executive Producer  
Dirty Teacher – Executive Producer  
The Surrogate – Executive Producer  
Merry In-Laws – Executive Producer  
A Bride for Christmas – Executive Producer  
Naughty or Nice – Executive Producer  
Christmas Crush – Executive Producer  
Teenage Bank Heist – Executive Producer  
How to Fall in Love – Executive Producer  
Home Invasion – Executive Producer

Final Sale – Executive Producer  
Confined – Executive Producer  
Tornado Valley– Executive Producer  
The Wedding Dance– Executive Producer  
Trust – executive producer  
Toxic Skies– executive producer  
Storm seekers – executive producer  
Making Mr. Right – executive producer  
Love Sick – executive producer  
Just Breathe – executive producer  
Devils Diary – executive producer  
Swarm – executive producer

### **JOHNSON PRODUCTION GROUP**

The Johnson Production Group contracts globally to produce television and motion picture content for international networks, studios and distributors. Based in Los Angeles and Vancouver, British Columbia, the company manages production, facilitates development and financing, procures distribution and guarantees quality and timely execution of its programs. While costs have gone up, so has the demand for quality. No longer is good enough, good enough. Johnson Production Group serves that segment when a show needs to be "A" quality, but produced efficiently enough to meet a locked budget. JPG specializes in value, protection of creative elements, and delivery of a quality finished product.

### **DOUG CAMPBELL – Director**

Lately Doug has been directing feature films with his friends Producer Ken Sanders and Producer/DP Robert Ballo. Since 2009 they have completed multiple features which have all been acquired by Lifetime. Doug has directed 21 feature films (twelve of which he wrote or co-wrote), 18 hours of network TV, four commercials and 20 short subjects. His projects have appeared in theaters and on TV across the world. Domestically, CBS, HBO, Lifetime, Showtime, Fox, PAX-TV, The Family Channel and other networks have broadcast my work. A film he financed, wrote and directed, THE TOMORROW MAN, was nominated for Best New Live Action Feature, Best Director and Best Screenplay in the 2001 DVD Premiere Awards sponsored by Daily Variety Magazine. Doug took home the Best Director Award.

Growing up in the San Fernando Valley north of Los Angeles, Doug made his first Super-8 when he was fourteen. After studying under Sandy Mackendrick at California Institute of the Arts, he directed his first feature film at age 24. Since then, shooting low budget films and TV has taught him to work fast, get the good performance and keep it fun. Having directed different genres

(action, family adventure, children's television, documentary, sci-fi and teen comedy), his favorites are thriller and drama. In 2003 Jikei schools asked Doug to design the curriculum and launch a new film school, Tokyo Film Center School of Arts. Currently he teaches at Academy of Art University in San Francisco under Executive Director Diane Baker. "Filmmaking is something I knew I wanted to do as a kid, and I can't imagine doing anything else."

## **ROBERT BALLO** –Producer

With over 34 years of industry experience, Robert Ballo has created award-winning productions for clients that include ABC, TBS, PBS, Discovery Channel, and Lifetime, and that have aired on national network television, cable networks, and internationally in Asia and Europe. As Director of Photography and Producer at Shadowland, Ballo has created over a dozen feature films seen on the Lifetime Network and distributed internationally. As Director of Photography, his Shadowland films include MISSING AT 17, THE SURROGATE, STALKED AT 17, TEENAGE BANK HEIST, WALKING THE HALLS, BETRAYED AT 17, HOME INVASION, MATERNAL OBSESSION, ACCUSED AT 17 and SPECTRES. Other feature film credits include RUNNIN' AT MIDNITE, THE AFFAIR and STARVING ARTISTS. Ballo has also traveled the world on many documentary productions.

His television credits for national broadcast and cable networks include COLLEGE SPORTS IN AMERICA, GREAT EUROPEAN BALLOON ADVENTURE, DIRTY HARRY THE ORIGINAL, THE GREAT YEAR, and THE ROSE PARADE - PAGEANT FOR THE AGES. Through his other digital motion picture company, GOAL Productions, Ballo works with Fortune 500 companies, non-profit organizations and government agencies to produce sales and marketing videos as promotional communications.

After a twenty-year tenure teaching film and video imaging, Ballo recently retired from his position as an Associate Professor of Practice at USC's School of Cinematic Arts. A graduate of the USC film production program himself, Ballo is a member of the Academy of Television Arts and Sciences.

## **Billing Block**

Johnson Production Group Presents in association with Shadowboxer Films presents  
"DESIGNED TO KILL" Starring Linsey Godfrey Joshua Hoffman Ellen Michelle Monohan  
Casting by Jeff Hardwick, C.S.A. Sound Design by Andres Boulton Music by Marc Jovani  
Edited by Thijs Bazelmans Costume Designers Bob Miller Steve Trevor  
Production Designer Jade Spiers Director of Photography David Dolnik

Line Producer Dan Golden Executive Producer Timothy O. Johnson  
Produced by Robert Ballo Marianne C. Wunch Story by Doug Campbell Screenplay by  
David Chester Directed by Doug Campbell



© MMXVIII – Johnson Management Group, Inc. All Rights Reserved

---

Johnson Production Group



---

JOHNSON PRODUCTION GROUP

## Meta Data

### LONG (max 540 characters) synopsis

Broken NYC fashion photographer Jennifer Higgins flees to LA to heal and teach a class called "Fashion and Photography" at a local high school. Seeing potential in a nerdish student, David, she does a makeover on him, transforming him into a gorgeous runway model. Overnight, David matures into not only the hottest guy on campus, but Jennifer's obsessive crush. Unable to cope with his new popularity, she takes drastic steps to keep him for herself. (514)

### MEDIUM (max 180) synopsis

Emotionally damaged NYC fashion photographer Jennifer flees to LA to teach a high school class. Her makeover of nerdy student David transforms him into a guy that she can't resist. (180)

### SHORT (max 54 characters) synopsis

The fashion runway becomes a deadly place (41)

### 5 KEY WORDS

Runway, teacher, photographer, makeover, fashion