

# STALKED BY MY NEIGHBOR

A Johnson Production Group Presentation

In association with Shadowland

Press Kit

## Synopsis

One night, while the upbeat, 18 year old photographer Jodi Allen video-chats on computer with her mother Andrea, a psychotic man invades their downtown apartment. Andrea, unable to defend her daughter, calls the police, but it's too late: Andrea watches in horror, via Skype, as the man rapes her daughter.

A few months later, Andrea and Jodi leave the city, moving to a nice house in a pretty suburban neighborhood. Andrea is certain they have left their problems behind them, but Jodi, now emotionally traumatized, is fearful of her new surroundings. A few nights later, while Jodi takes photographs from her bedroom window, she looks across the street to see an ominous shadow in her neighbor's house. Is she watching a home invasion? Has her nightmare returned? Panicked, Jodi sprints across the street to warn Lisa, the nice neighbor lady. Jodi and Lisa search the house, but they find nothing.

The next day, when Lisa's niece Kristen, 18, returns from a camping trip, Jodi and she are horrified when they find Lisa dead on her bathroom floor. Did Jodi witness a murder? Or, as police Detective Franklin suspects, was it an accident? Jodi knows what she saw! She's certain Lisa was murdered, and she sets out on a personal mission to determine the identity of the ominous shadow.

She immediately suspects the 21-year-old trouble-maker of the neighborhood, Nick Thompkin. Jodi tries to convince her mother Andrea that Nick did it, but Andrea doesn't believe her. Instead, Andrea feels Jodi is paranoid, a natural reaction after being raped. In a touching moment, Andrea admits to Jodi that she blames herself for not being able to rescue her daughter that fateful night. Determined, Jodi begins to spy on Nick, only to learn that he is indeed innocent... and that he's a really great guy. Soon, she finds herself falling for the charming Nick.

The next day, Detective Franklin reveals the results of the police investigation, and they are now certain that Lisa was murdered. Based partly on Jodi's testimony, Detective Franklin suspects Nick! Now Jodi must race to prove Nick's innocence and find the real killer. Whodunnit? Was it the lecherous divorced neighbor Ted? Was it the innocent, Bible-carrying niece Kristen? Or was it Jodi's own mother, Andrea? Unbeknownst to Jodi, the true killer is closer to her than she thinks. In a frantic finish, the killer tries to eliminate Jodi to tie up loose ends. Now Jodi must fight for her life -- and battle the recurring nightmare of her rape -- to survive.

## Producers

Executive Producer

TIMOTHY O. JOHNSON

Producer

KEN SANDERS

Producer

ROBERT BALLO

JOHNSON PRODUCTION GROUP

Lifetime

# STALKED BY MY NEIGHBOR

## Key Cast

<u>CHARACTER</u>	<u>ACTOR</u>
Andrea Allen	AMY PIETZ
Jodi Allen	KELCIE STRANAHAN
Nick Thompkin	GRANT HARVEY
Ted Wilcox	ETHAN ERICKSON
Lisa Miller	KELLY PACKARD

## Key Cast Biographies

### Amy Pietz



Amy's many TV credits include series regular roles on: *THE NINE LIVES OF CHLOE KING*, *CAROLINE IN THE CITY* (SAG Award nomination), *ALIENS IN AMERICA*, *THE AMAZING MRS. NOVAK* (title role), *RODNEY*, *THE WEBER SHOW*, and *MUSCLE*. Recurring: *THE OFFICE*, *TRUST ME*, and *ALLY MCBEAL*. Guest Star: *TWO AND A HALF MEN*, *DEXTER*, *CURB YOUR ENTHUSIASM*, *NECESSARY ROUGHNESS*, *THE CLOSER*, *NIP/TUCK*, *MEDIUM*, *BONES*, *BURN NOTICE*, *LAW AND ORDER SVU*, *ER*, *CSI*, *GHOST WHISPERER*, *THE DREW CAREY SHOW*,

*I'M WITH HER*, *CONRAD BLOOM*, and *THE DIVISION*. Film: *PROM*, *THE PACT II*, *AUTUMN LEAVES*, *RUDY*, *JINGLE ALL THE WAY*, *DYSENCHANTED*, *JELL-OH LADY*, *THE WHOLE TEN YARDS*, *REUNION*, *YOU*.

Theatre: *THE POWER OF DUFF* (Huntington Theatre, Boston), *A VIEW FROM THE BRIDGE* and *YOU CAN'T TAKE IT WITH YOU* (Steppenwolf Theatre), *IN THE FLESH* (Organic Theatre), *THE LOVE OF THE NIGHTINGALE* (The Next Theatre,) and *WAITING FOR LEFTY* (Artistic Home.) Other theatre credits include *A DEAD MAN'S APARTMENT* (Met Theatre), *THE BOSWELL SISTERS* (Old Globe), *CHRISTMAS IN NAPLES* (Williamstown Theatre Festival), *LOBBY HERO* (Ovation nomination-Odyssey Theatre), *FIORELLO* and *COMPANY* (Ovation nominee -Best Featured Actress in a Musical, LA Reprise).

In 2001, Amy produced a musical adaptation of the movie, *XANADU*, at the Gascon Center Theatre. The show went on to Broadway, winning Tony nominations, and later a national tour. She is a founding member of Teatro de Facto in LA and Eclipse Theatre Company in Chicago. Amy has done over 20 plays with LA Theatre Works, including touring China as Katherine Graham in *TOP SECRET: THE BATTLE FOR THE PENTAGON PAPERS*. Other favorite with LATW include *ENRON*, *A VIEW FROM THE BRIDGE*, *THE SOUTH PAW*, *AFTER THE FALL*, *VOIR DIRE*, *CALIFORNIA SUITE*, *THE CHERRY ORCHARD*, *MIDDLE OF THE NIGHT*, and the musical *FALSETTOS*. She is a graduate of the former Goodman School of Drama, which awarded her with "Excellence in the Arts" for her work in radio, television and theatre.

JOHNSON PRODUCTION GROUP

Lifetime

# STALKED BY MY NEIGHBOR



## Kelcie Stranahan

Born in the San Francisco Bay Area, Kelcie Stranahan began acting and modeling at age 11. She has modeled for Pottery Barn, Macy's, Stunning Lure, LF Stores and a national campaign for Levi Strauss. Kelcie danced competitively for 10 years and continues to enjoy tap, jazz and ballet. Through her dancing stage performances, Kelcie soon realized that her true passion was acting.

Kelcie recently wrapped the feature film THE WATCHER opposite Amy Pietz and stars in the 2013 feature film UNDER THE BED, opposite Jonny Weston.

Kelcie can also be seen in the films HIGH SCHOOL CRUSH, LAST HOURS OF SUBURBIA and HIDING. In addition to her work in film, Kelcie was a Series Regular in the web-series, THE RUNAWAYS, on Awesomeness TV which was co-created by Brian Robbins and Joe Davola. Kelcie has performed in local Bay Area theatre for years and has significant roles in several independent films.

While her main interest is acting, Kelcie also enjoys traveling, photography, reading and baking.



## Grant Harvey

Grant Harvey is an American actor from Hawthorne, NV and Boston, MA, best known for leading roles in many critically acclaimed Independent Films as well as TV shows like "The Secret Life of The American Teenager," "The Neighbors," "CSI:NY" and the acclaimed mini-series, "Runaways."

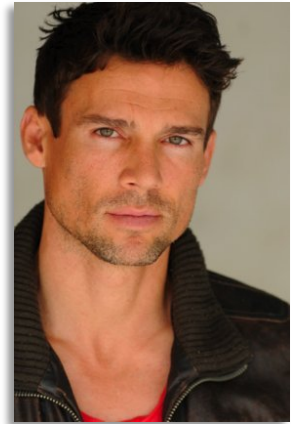
JOHNSON PRODUCTION GROUP

Lifetime

# STALKED BY MY NEIGHBOR

## Ethan Erickson

Ethan Erickson, a native of Minneapolis, left home after high school in pursuit of California dreams. He attended UC Santa Barbara where he studied English Literature and maintains to this day it was the best four year vacation of his life. After graduating he got sucked into the black hole of Los Angeles and the Entertainment Biz. At first hesitant about life in LA, it ended up working out pretty well. Since his late start he has starred in everything from "Guiding Light" and the reboot of "Melrose Place" to cult films like "Jawbreaker" and "John Dies at The End." Currently, Erickson enjoys life with his beautiful wife and dog and tries his best to travel as well as kite surf anytime he's not on set.



## Kelly Packard

Kelly Packard began her career in entertainment by appearing on television commercials at the age of eight before going on to win the title of *Miss California Pre-Teen* in 1988. She later made the transition to series television with guest appearances on such shows as *Blossom*, *The Wonder Years*, *Boy Meets World*, *Step by Step*, *Living Dolls* and *USA High*.

Her first series-regular role was on the NBC comedy *California Dreams - from Saved by the Bell* producer Peter Engel. Barely sixteen, Packard took on the role of surfer-chick *Tiffani Smith* and portrayed the character for five seasons (1992 - 97). The original cast reunited on *Late Night with Jimmy Fallon* in 2010. The actress is probably best known for the role she landed after graduating from the studio beaches of *California Dreams*. Packard starred for two seasons on *Baywatch* as *April Giminski* (1997 - 99), the fashion-designing-lifeguard, alongside cast mates David Chokachi, Michael Bergin, Carmen Electra and David Hasselhoff.

Next on the horizon for Packard was a co-hosting position opposite Dean Cain on the series *Ripley's Believe It or Not!* The actress-turned-TV-host traveled the world for two TV seasons (2002 - 03) reporting on outrageous feats performed by extraordinary people. Packard's additional hosting credits include *GSN Live* on The Game Show Network with Fred Roggin, *House Wars* for USA Network, the four-part special *Secret Beaches* for The Travel Channel, *RopeSport* with MTV's Eric Nies, *Billy's BootCamp* with fitness expert Billy Blanks as well as numerous programs and specials for KCET and E! Entertainment Television.

Her film credits include *The Watcher* (2014), *Zoe Gone* (2014), *My Girlfriend's Boyfriend* (2010), *Auto Focus* (2002), *Get Your Stuff* (2000) and *Little Bigfoot* (1997).

Packard currently resides in the Los Angeles area with her husband Darrin and their four children – Aubrey 10, Dalin 8, Halle 4 and Delaney 20 months.

JOHNSON PRODUCTION GROUP

Lifetime

# STALKED BY MY NEIGHBOR

## Director Biography



### Doug Campbell

Since 2009 Doug has directed twelve feature films for Shadowland, all of which have been acquired by Lifetime. In total, he has directed 21 features (twelve of which he wrote or co-wrote), 18 hours of network TV, four commercials and 20 short subjects. Doug's projects have appeared in theaters and on television across the world, including CBS, HBO, Lifetime, Showtime, Fox, PAX-TV, The Family Channel and other

networks. THE TOMORROW MAN, a film Doug financed, wrote and directed, was nominated for Best New Live Action Feature, Best Director and Best Screenplay in the 2001 DVD Premiere Awards sponsored by Daily Variety Magazine; and he took home the Best Director Award. Growing up in the San Fernando Valley north of Los Angeles, Doug made his first Super-8 when he was fourteen. After studying under Sandy Mackendrick at California Institute of the Arts, he directed his first feature film at age 24. Since then, shooting low budget films and TV has taught him to work fast, get the good performance and keep it fun. Having directed different genres (action, family adventure, children's television, documentary, sci-fi and teen comedy), his favorites are thriller and drama. In 2003 Jikei schools asked Doug to design the curriculum and launch a new film school, Tokyo Film Center School of Arts. Currently he teaches at Academy of Art University in San Francisco under Executive Director Diane Baker. "Filmmaking is something I knew I wanted to do as a kid, and I can't imagine doing anything else."

JOHNSON PRODUCTION GROUP

Lifetime



# STALKED BY MY NEIGHBOR

Casting by	Jeff Hardwick, C.S.A.
Production Designer	Caitlin Laingen
Costume Designer	Megan Zanzinger
Director of Photography	Robert Ballo
Editor	Clayton Woodhull
Music by	
Screenplay by	Doug Campbell
Directed by	Doug Campbell
Line Producer	Marianne C. Wunch
First Assistant Director	Neil Kinsella
Additional First Assistant Director	Jeff Robinson
Second Assistant Director	David Bear
2 <sup>nd</sup> Second Assistant Director	Amanda Boisselle
Additional Director of Photography	Eric Roy Anderson
"A" Camera Operators	Joseph M. Setele
	Brian Sowell
"A" Camera First Assistant	Nicole Crivlare
"A" Camera Second Assistants	Karyn Gabrielsen
	Ross Reeder
"B" Camera Operator	John Rhode
"B" Camera First Assistants	Michael Chomieniec
	Katie Santore
	Sebastien Thibeau
	Heidi Zimmermann
	Brady Cook
	Charles Christopher
	April McQuarrie
	Eva Rismanforoush
	Darryl Williams
	Derek Bishé
	Jen Tracy-O'Connor
	Dylan Metzger
	Marc-Alain Miller
	Charles Nankivel
	Raven Zimmer
	Brianna Smariga
	Bridget Bungart
	Amy Hanlin
	Patrick Anthony Lising

JOHNSON PRODUCTION GROUP

Lifetime

# STALKED BY MY NEIGHBOR

Chief Lighting Technician  
Assistant Chief Lighting Technician  
Set Lighting Technician

Mike Stockton  
Josh Bell  
Anderson Lau

Key Grips

Blake Gaytan  
Tyler Begg  
Michael Lemnitzer  
Andres Murillo  
Mauricio Villalobos  
Kevin Hahn  
Rene Yescas  
Alexandre E. Nunez  
Christopher Wess

Best Boy Grip  
Company Grips

Additional 2<sup>nd</sup> Second Assistant Director  
Key Production Assistant  
Truck Production Assistant  
Production Assistants

Charlie Forray  
Derek Van Valkenburg  
Val Blakely  
Michael Yedwab  
Hannah R. Blackwell  
Deanna Chittum  
Alan Takagi

Set Medic  
Craft Service  
Catering  
Chef

Christian Avila  
Joel Halstead  
CF Food Kitchen  
Edwing Flores

Production Accountant

Sheri Reeves

Extras Casting Director

Little Bird Casting  
Morgue N. Marcus

Locations Manager  
Locations Assistants

Madeline Randolph  
Gage Brown  
Aileen Randolph

Second Unit Director  
Second Unit First Assistant Directors

Daniel Ringey  
Thomas Raimondo  
Jeff Hallenbeck

Second Unit Directors of Photography

Tina Martin  
Kelly Richard Travis  
Ardavon Fatehi

Second Unit Camera First Assistants

Blake Hooks  
Max Margolin  
Sean Brad Miller

JOHNSON PRODUCTION GROUP

Lifetime

# STALKED BY MY NEIGHBOR

Post Production Supervisor  
Assistant Editor  
Visual Effects Supervisor  
VFX Artist

Griff Partington  
Kai-Peter Groschupf

Sound Supervisor  
Dialogue Editor  
SFX Editor  
Foley Artist  
Foley Engineer  
Re-Recording Mixer

JOHNSON PRODUCTION GROUP

*Lifetime*



# STALKED BY MY NEIGHBOR

## Executive Producers Biographies

### Tim Johnson

Tim Johnson is among the most active and reliable producers in the business thanks to top rate productions and an 'on time, on budget' reputation. Previously, he managed the production of ABC's THE DAYS (MINDSHARE/TOUCHSTONE.) Prior to forming Johnson Production Group and Ignite Entertainment, Tim served as Head of West Coast Programming Executive and launched the successful series DOC (88 episodes,) SUE THOMAS, FBI, MYSTERIOUS WAYS, JUST CAUSE, PONDEROSA, CHRISTY, ITS A MIRACLE AND MIRACLE PETS.

Johnson is also responsible for producing the international hit series, DR. QUINN, MEDICINE WOMAN for CBS PRODS/SULLIVAN COMPANY for over 5 seasons. During his 100 episode tenure, he also launched LIVE FROM THE RANCH with Orson Bean - a nationally syndicated talk show focusing on family values in America. He also developed and produced the original docu-drama COLD CASE for CBS network, which was the very first program to integrate television with the internet.

### **Recent Projects:**

Home Invasion (2011) – Executive Producer  
Final Sale (2011) – Executive Producer  
Confined (2010) – Executive Producer  
Tornado Valley (2009) – Executive Producer  
The Wedding Dance (2009) – Executive Producer  
Trust (2009) – executive producer  
Toxic Skies (2008) – executive producer  
Storm seekers (2008) – executive producer  
Making Mr. Right (2008) – executive producer  
Love Sick (2008) – executive producer  
Just Breathe (2008) – executive producer  
Devils Diary (2007) – executive producer  
Swarm (2007) – executive producer

### **JOHNSON PRODUCTION GROUP**

The Johnson Production Group contracts globally to produce television and motion picture content for international networks, studios and distributors. Based in Los Angeles and Vancouver, British Columbia, the company manages production, facilitates development and financing, procures distribution and guarantees quality and timely execution of its programs. While costs have gone up, so has the demand for quality. No longer is good enough, good enough. Johnson Production Group serves that segment when a show needs to be "A" quality, but produced efficiently enough to meet a locked budget. JPG specializes in value, protection of creative elements, and delivery of a quality finished product.

JOHNSON PRODUCTION GROUP

Lifetime