

Stalked By My Doctor

A SLEEPWALKER'S NIGHTMARE

Johnson Production Group Press Kit

One-Liner

Dr. Albert Beck finds his way into a sleep clinic only to fall for his first patient, Michelle, who suffers from sexsomnia

Synopsis

Wanted for multiple crimes, Dr. Albert Beck (Academy Award nominee Eric Roberts) hides out as a lowly waiter at a roadside diner in the New Mexico desert. But Beck escapes his dead-end life when he assumes the identity of another doctor en route to a new job at a nearby sleep clinic.

After charming his way past the clinic's director, Pamela (Felissa Rose), Beck falls for his first patient: Michelle (Emilie Ullerup; *Sleepwalking in Suburbia*), who suffers from sexsomnia - a rare condition that causes her to sleepwalk into sexual relations with strangers. Beck dedicates himself to Michelle's treatment, using it as an excuse to get close to her and try to win her affections.

But Beck's romantic interest in Michelle is derailed by the arrival of her beautiful niece, Katie (Angeline Appel), who suffers from a similar nocturnal condition. Beck turns his romantic attentions to the younger woman, causing Michelle to grow suspicious and alert Pamela, who also begins to question Beck's erratic behavior...

Needing to clear the path for his relationship with Katie, Beck frames Michelle for Pamela's murder and has her institutionalized for the crime - giving him total access to a distraught Katie. Michelle, realizing Beck's true intentions, escapes from the asylum and races to save her niece from the murderous doctor - leading to a dangerous showdown between Michelle, her sleepwalking niece, and the lovelorn Dr. Beck!

Producers

Executive Producer
TIMOTHY O. JOHNSON

Producer
KEN SANDERS

Co-Producers
SHERI REEVES
JOSEPH WILKA

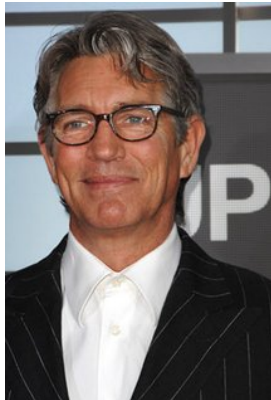
Associate Producer
CHRISTIAN ACKERMAN

Key Cast

<u>CHARACTER</u>	<u>ACTOR</u>
Albert Beck	ERIC ROBERTS
Michelle	EMILIE ULLERUP
Katie	ANGELINE APPEL
Pamela	FELISSA ROSE
Nicky Bismar	MICHAEL PERL
Leo	MATT RIFE

Key Cast Biographies

ERIC ROBERTS



Eric Roberts is an Academy Awards nominee for his role in Runaway Train and a three-time Golden Globes nominee for Runaway Train, Star 80 and King of the Gypsies . He also won a Golden Satellite Award for the 2002 season of Less Than Perfect .

He also made a profound impact in the Emmy nominated television adaptation of Truman Capote's In Cold Blood , directed by Jonathan Kaplan and co-starring Anthony Edwards and starred in La Cucaracha , which won Best Film at the Austin Film Festival in 1998, and for which Eric won Best Actor in the New York Independent Film Festival that same year. Eric's starring role in the film, It's My Party , received critical acclaim at the 1996 Sundance Film Festival .

Eric has diversified very recently, appearing in Sophie Muller's Mr. Brightside video for The Killers, Brett Ratner's video for Mariah Carey's Emancipation of Mimi – Both award winners, and the Akon and Eminem video for Smack That .

Other notable performances include his roles in Final Analysis, The Pope of GreenwichVillage, Raggedy Man, Babyfever, Heaven's Prisoners, The Specialist and The Grave.

Eric Roberts was recently seen in Christopher Nolan's Batman – The Dark Knight , along with one of the most incredible casts ever assembled. This follows a stint on Heroes – A job that ranks as one of Eric's

favorites. Eric strives to be associated with more comedy, hence will be appearing in a Larry The Cable Guy movie, Witless Protection.

Eric Roberts was born in Biloxi, Mississippi and grew up in and around Atlanta, Georgia area. He began his career as an actor in his late teens in New York City. In 1989 Eric won the Theatre World Award for his role on Broadway in Burn This . He returned to the New York stage in 2003 in The Exonerated , which he appeared in as part of their touring company as well.

EMILY ULLERUP



Ullerup-Petersen was born in Denmark, where her father Ove Ullerup-Petersen, a Jurist and Diplomat and a decorated Ambassador of Denmark in Vietnam, held the title of Lord Chamberlain for the Danish Royal Family.

It was always been her ambition to become an actress. When she graduated from high school in Copenhagen in 2003, she moved to Vancouver to pursue acting as a career. She studied at the Vancouver Film School and graduated in 2005.

Her first role was that of Julia Prynne in the hit sci-fi TV show Battlestar Galactica (2004). She also played the part of Sandra in the first episode of Blood Ties (2006). She was one of the main characters in the ground breaking series Sanctuary (2008) where she starred alongside Amanda Tapping. Emilie continued her journey and enjoyed versatility in her work bouncing between genres of Drama, Horror, Action and Comedy. She spent three seasons on the hit show Arctic Air as the lovably temperamental Swedish pilot, Astrid. She was continuously nominated for Leo Awards and UBCP Awards over several seasons of the series.

Recently Emily has starred in a variety of movies, particularly the popular Sleepwalking In Suburbia.

ANGELINE APPEL



Angeline Appel was born as Angeline Fioridella Appel. She is an actress, known for Step Up Revolution (2012), Shameless (2011) and The Fosters (2013).

FELISSA ROSE



Felissa Rose Esposito grew up in New York always wanting to perform. At the age of 13, she landed the role of Angela in the cult film *Sleepaway Camp* (1983). At the age of 17, she applied for early admission to New York University's Tisch School of the Arts and was admitted that fall. Attending The Lee Strasberg institute, she began formal training as a serious actress.

Performing in plays around Manhattan put her hard work to the test. Felissa played Denise Savage in *Savage in "Limbo,"* Karen in "Phone Sex," Renée in David Henry Hwang's "M.Butterfly," Willie in "This Property is Condemned," Desdemona in William Shakespeare's "Othello," and many more. Film work includes Woody Allen's *Another Woman* (1988), *Pain and Suffering*, *The Night*

We Never Met (1993), and MTV's *The Party Phone Series* opposite Adam Sandler. She is currently working with NY Dinner Theater and plays Louise in *Disorganized Crime* as well as pursuing TV and film work.

MICHAEL PERL



Michael, a native Angeleno, got his first role as Danny Zuko in his 5th grade production of "Grease" Two things he didn't realize when rehearsals started: one, this would become a lifelong thing and two, that he was going to be in big trouble for nicking his dad's cigarettes and rolling them up in the arm of his tiny white t-shirt for the first performance. He played Winston in the TV series based on the popular Francine Pascal novels, "Sweet Valley High" When the show ended, he went to get his BFA in Theatre from UCLA's school of Theatre, Film and Television. Since graduating, Michael has been working consistently in film, television and Los Angeles theatre.

Michael started a production company, Burton Street Productions, with his wife Melissa Lugo. They have produced award-winning short films and web series under that banner.

MATT RIFE



Matt Rife is an American standup comedian & actor originally from Ohio. Matt first started standup comedy at the age of 15 and has since toured around the world performing with some of the biggest names in comedy; Dane Cook, Ralphie May, Finesse Mitchell, Mike Epps, Deray Davis, Erik Griffin, etc... Now living in Los Angeles, Matt has become a popular regular in the comedy scene, including being the youngest male regular performer at the World Famous Laugh Factory. Comedy in his roots, Matt has easily transitioned into his much larger passion, acting. Getting his start on a couple of Disney shows until his break came when he was added as a leading cast member on MTV's hit show *Wild N Out* back in season 7.

Production Credits

Full Cast

Actors

ERIC ROBERTS
EMILIE ULLERUP
ANGELINE APPEL
FELISSA ROSE
MICHAEL PERL
MATT RIFE
STEVEN CHAN
CLAYTON ROHNER
MICHAEL C. ALEXANDER
RICKY DEAN LOGAN
MATTHEW GILMORE
BOB BANCROFT
NICOLE DUBOIS
XIAN MIKOL
MARISA ECHEVERRIA
JACOB FIGUEROA

Role

Albert Beck
Michelle
Katie
Pamela
Nicky Bismar
Leo
Tyler
Dr. Tanner
Detective
Sal
Rick
Dr. Trotter
Bobby Jo
Carrie
Bride
Dan

Casting by

JEFF HARDWICK, CSA

Costume Designer

MEARYGRACE GATO

Sound Design by

ANDRES BOULTON

Music by

STEVE GUREVITCH

Edited by

GREGORY HOBSON

Production Designer

CHASE WRIGHT

Director of Photography

FERGUSON SAUVÈ-ROGAN

Associate Producer

CHRISTIAN ACKERMAN

Co-Producer

SHERI REEVES
JOSEPH WILKA

Executive Producer

TIMOTHY O. JOHNSON

Story by

KEN SANDERS
ALEX WRIGHT

Based on Characters Created by

DOUG CAMPBELL
BRYCE DOERSAM

Screenplay by

JEFF HARE
DANIEL WEST

Produced by

KEN SANDERS

Directed by

JEFF HARE

Full Crew

JOSHUA LOU FRIEDMAN	first assistant director
JOSH BROWN	second assistant directors
JOHN J. TIERNEY	
JAVIER GALAVIZ	
AUSTIN J. BRUCKS	second second assistant director
GABBI LATADE	production coordinator
KENNEDY DEL TORO	script supervisors
KATYA LOBAN	
KATE KETCHAM	camera operators
JAY RUGGIERI	
DAVID SPECK	
CARSON REAVES	a camera first assistant
ROSE N. OXNARD	additional a camera first assistants
ALAN KOPLIN	
JUSTIN R. SCHULTZ	b camera first assistant
LAMONT J. REEVES	second assistant camera
TYLER M. MANZO	
JAY RUGGIERI	steadicam operators
NEIL BACHAND	
KYRA DUNN	d.i.t
CHARLES CHRISTOPHER	still photographer
JASON AARON MORAN	production sound mixer
DANIEL KAUTZ	gaffer

NATHAN HANSEN	best boy electrics
MONICA MEJIA	
ANDREW DORWARD	
JENS ERICSON	
BRIAN PATIERNO	key grip
ISAIAH REZA-SOTO	additional key grip
FAISAL SHAH	
FAISAL SHAH	best boy grip
JUSTIN KNODEL	grip & electric swing
COLVIN ANG WEI SONG	
ROB E. BENNETT	
KEVIN MANNING	
MICHAEL SURACI	
ROBERT PAGE-ROBERTS	prop master
LANE YOUNG	art director
MICHAEL O'CONNOR	set dresser
KRISTA KARKAR	art swing
DOMENICO RISO	
MICHAEL KNUDSEN	costume supervisor
JENNIFER PATTERSON	makeup department heads
ERICA MEDINA	
JENNIFER PATTERSON	hair department head
CRYSTAL LOZADA	makeup artist
TIFFANY ROYDSEN	hair stylist
DEAN GALANIS	location manager
LUKE LAKIN	key assistant location manager
PETE SUTTON	extras casting director
CHRISTOPHER M. MILLER	assistant to eric roberts
RICHARD ANDAL	production assistants
TANNER CONANT	
SHANIA GEZ	
MIRNA HMAYDANI	
NICOLETTE HOGAN	
HALEY MEYERS	
MICHELLE NASSIF	
DARBY NEVEU	
RYAN KELLY	
ADAM RODRIGUEZ	
PHILLIP RODRIGUEZ	
JOHNNY ROMER	
DAX RUBISH	
MORGAINA RUNIONS	
JILL SMITH	
ELIZABETH WHITFIELD	
MICHAEL TODD WYNN	
ERIN TAYLOR	
CHRISTOPHER M. JIMENEZ	
HAYLEY HONEYCUTT	craft service

BAILEY WEIR
B & G THAI FOOD CATERING caterer
GROUPZEE J. DEVLIN

Second Unit

TED CAMPBELL directors
MARCO BARGELLINI
DAVID BENULLO
CHRISTIAN ACKERMAN
CHUCK PARELLO
JOSH BROWN first assistant director
KATE KETCHAM director of photography
MICHAEL SURACI gaffer
GREG UNGER
GERALD WOLFE production sound mixers
MAYRA RODRIGUEZ
LELLAN THOMAS

Producer Biographies

TIM JOHNSON – Executive Producer

Tim Johnson is among the most active and reliable producers in the business thanks to top rate productions and global distribution appeal.

Johnson is also responsible for producing the international hit series, DR. QUINN, MEDICINE WOMAN for CBS for over 5 seasons. During his 100-episode tenure, he also developed and produced the original docu-drama COLD CASE for CBS network, which was the very first program to integrate television with the Internet.

Johnson has produced over 150 movies, 15 globally released series for every major US network - including ABC, Disney, CBS, NBC, Netflix, FOX and Sony.

JOHNSON PRODUCTION GROUP

The Johnson Production Group contracts globally to produce television and motion picture content for international networks, studios and distributors. Based in Los Angeles and Vancouver, British Columbia, the company manages production, facilitates development and financing, procures distribution and guarantees quality and timely execution of its programs. While costs have gone up, so has the demand for quality. No longer is good enough, good enough. Johnson Production Group serves that segment when a show needs to be "A" quality, but produced efficiently enough to meet a locked budget. JPG specializes in value, protection of creative elements, and delivery of a quality finished product.

KEN SANDERS - Producer

Over the past decade and a half, Ken Sanders has written and/or produced over forty feature-length motion pictures. Since starting his film production company, Shadowland, LLC, with partner Robert Ballo in 2009, Sanders has also produced THE CHEATING PACT, MISSING AT 17, THE PERFECT BOYFRIEND, DIRTY TEACHER, THE SURROGATE, STALKED AT 17, TEENAGE BANK HEIST, WALKING THE HALLS, BETRAYED AT 17, HOME INVASION, MATERNAL OBSESSION, and ACCUSED AT 17, all of which received big ratings when they premiered on Lifetime Television.

JEFF HARE – Director

Jeff Hare has been writing and directing movies, television, television commercials and infomercials, corporate films and videos and documentaries for over twenty years. His work is extremely diverse, and has been seen on movie screens worldwide, and on TV networks like Fox, American Movie Classics, Lifetime, LMN, MY NETWORK, Discovery, SPEED-TV, Cartoon Network and BET, to name just a few.

Billing Block

JOHNSON PRODUCTION GROUP in association with HARBOR LIGHT STUDIOS Presents

“STALKED BY MY DOCTOR: A SLEEPWALKER'S NIGHTMARE”

Starring ERIC ROBERTS ANGELINE APPEL FELISSA ROSE MICHAEL PERL MATT RIFE

AND EMILIE ULLERUP Casting by JEFF HARDWICK, CSA

Costume Designer MEARYGRACE GATO Sound Design by ANDRES BOULTON

Music by STEVE GUREVITCH Edited by GREGORY HOBSON

Production Designer CHASE WRIGHT Director of Photography

FERGUSON SAUVÈ-ROGAN Associate Producer CHRISTIAN ACKERMAN

Co-Producers SHERI REEVES JOSEPH WILKA Executive Producer TIMOTHY O. JOHNSON

Story by KEN SANDERS & ALEX WRIGHT Based on Characters Created by DOUG

CAMPBELL & BRYCE DOERSAM Screenplay by JEFF HARE & DANIEL WEST

Directed by JEFF HARE



Meta Data

LONG (max 3000 characters) synopsis

Wanted for multiple crimes, Dr. Albert Beck (Academy Award nominee Eric Roberts) hides out as a lowly waiter at a roadside diner in the New Mexico desert. But Beck escapes his dead-end life when he assumes the identity of another doctor en route to a new job at a nearby sleep clinic.

After charming his way past the clinic's director, Pamela (Felissa Rose), Beck falls for his first patient: Michelle (Emilie Ullerup; *Sleepwalking in Suburbia*), who suffers from sexsomnia - a rare condition that causes her to sleepwalk into sexual relations with strangers. Beck dedicates himself to Michelle's treatment, using it as an excuse to get close to her and try to win her affections.

But Beck's romantic interest in Michelle is derailed by the arrival of her beautiful niece, Katie (Angeline Appel), who suffers from a similar nocturnal condition. Beck turns his romantic attentions to the younger woman, causing Michelle to grow suspicious and alert Pamela, who also begins to question Beck's erratic behavior...

Needing to clear the path for his relationship with Katie, Beck frames Michelle for Pamela's murder and has her institutionalized for the crime - giving him total access to a distraught Katie. Michelle, realizing Beck's true intentions, escapes from the asylum and races to save her niece from the murderous doctor - leading to a dangerous showdown between Michelle, her sleepwalking niece, and the lovelorn Dr. Beck! (1425)

MEDIUM (max 500) synopsis

Wanted for multiple crimes, Dr. Albert Beck assumes the identity of another doctor enroute to a new job at a sleep clinic. He falls for his first patient: Michelle, who suffers from nocturnal sexsomnia - until his interest is derailed by the arrival of her beautiful niece who suffers from a similar condition. Beck turns his romantic attentions to the younger woman, causing Michelle to grow suspicious and alerting clinic director, Pamela, who also begins to question Beck's erratic behavior... (497)

SHORT (max 100 characters) synopsis

Dr. Albert Beck is back in action treating sexsomnia patient, Michelle, and her beautiful niece (96)

5 KEY WORDS

sexsomnia, murder, Beck, sleepwalking, thriller