

Every A Time Bell Rings

Johnson Production Group Press Kit

One-Liner

Three sisters reunite in their hometown for one last scavenger hunt. As they search for clues their bond is rekindled and they find hope and healing.

Synopsis:

Charlotte, Emily and Nora are sisters who reunite in their hometown of Natchez, Mississippi at Christmas after a long time apart, and their mother Donna couldn't be happier to have them home for the holiday. Longtime friend Liam is also glad to see the sisters back in town, especially Charlotte. The trio is surprised to discover their late father had planned one last scavenger hunt for them to find their family's wooden wishing bell, which was a beloved, annual holiday tradition when they were young. Charlotte, Emily and Nora's search for clues in the days leading up to Christmas, takes them to childhood haunts around Natchez that hold special meaning for them. In the process, their sisterly bond is rekindled and each learns an important lesson about what they want in life and in love.

Producers

Executive Producers
J.R. "RICK" CARTER
TIMOTHY O. JOHNSON

Produced by
DANIEL LEWIS
ERIN CAHILL

Co-Producers
ALYS MURRAY
MISTY TALLEY

Key Cast

<u>CHARACTER</u>	<u>ACTOR</u>
Charlotte	ERIN CAHILL
Emily	BRITTANY ISHIBASHI
Nora	ALI LIEBERT
Paul	RYAN SANDS
Maizy	LYNDIE GREENWOOD
Donna	DEE WALLACE
Liam	WES BROWN

Key Cast Biographies

ERIN CAHILL



Erin Cahill's acting career was launched in 2001 when she was cast as Jen, the Pink Ranger in the series "Power Rangers: Time Force." Since then, she has starred as regular or recurring characters in numerous television series including, ABC's "Red Widow," TNT's "Saving Grace" and FOX's "Free Ride."

Cahill has guest-starred in over 30 television shows including "9-1-1," "Angel from Hell," "NCIS: Los Angeles," "How I Met Your Mother," "Sleepy Hollow," "Body of Proof," "Chuck," "Law & Order: Los Angeles," "The Mentalist," "Monk," "CSI: NY," "Supernatural" and "Greek," among others.

Starring in numerous features including Disney's Beverly Hills Chihuahua 2, Beverly Hills Chihuahua 3: Viva La Fiesta! and Sony's Boogeyman 3, Cahill has also starred in such independent films as It Snows All the Time, Wingman Inc. and most recently, Cut to the Chase, for which she won Best Supporting Actress at the Northeast Film Festival. She also appeared as the lead role in the Netflix and Lifetime film "The Watcher."

Cahill voices the female lead in both Sony's animated feature Resident Evil Vendetta and Activision's "Call of Duty: Black Ops 2" for X-Box and Playstation, and she also was featured in the pilot of "LA's Finest."

No stranger to Hallmark Channel, Cahill most recently starred in the network's "A Timeless Christmas" and was also seen in the network's 2019 movie "Love, Fall & Order" as well as the 2018 Hallmark Movies & Mysteries original "Last Vermont Christmas."

Cahill's passion project alongside her husband, is to raise funds to build schools in Nepal and Malawi and sending 10 school children from The Bronx, NY to Haiti on their own build, with the prestigious Build On Organization.

BRITTANY ISHIBASHI



Brittany Ishibashi is known for playing the villainous Tina Minoru in Marvel's hit show "Runaways" on Hulu, and as Tamiko Masuda on CBS' "Hawaii Five-0." She played another iconic villain, Karai, in Paramount's "Teenage Mutant Ninja Turtles: Out of the Shadows," a sequel to the summer 2014 blockbuster. Most recently, she has been seen recurring on CBS' "The Unicorn" and Netflix's "Grace and Frankie."

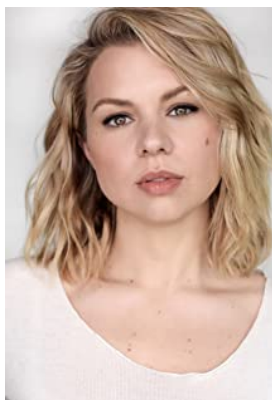
Born and raised in Orange County, California, Ishibashi was raised in a home filled with the arts. Her father, a concert promoter and musician, and mother, a singer, saw their daughter's love for performing and encouraged her to try her hand in many facets of the entertainment world. Ishibashi discovered her passion for musical theater at a young age, and went on to be a triple threat, excelling in dance, music and acting. She continued her formal education at UCLA's prestigious school of Theater, Film and Television, while building her acting resume outside of class. Her first big break came right after she graduated from high school, being cast by J.J. Abrams on the hit show "Felicity."

Ishibashi has gone on to work consistently over the years with recurring and guest star roles on numerous television series including "This Is Us," "The Office," "Grey's Anatomy," "House M.D.," "The Mentalist," "Emily Owens M.D.," "Bones," "Castle," "Major Crimes," "Grace and Frankie," "Young & Hungry" and "Supernatural." After an exciting debut at Comic-Con, she reprised her role as Maggie Zedmore in the "Supernatural" spinoff "Ghostfacers," which has developed a worldwide fan base. However, Ishibashi might be best known for her role as Anne Ogami on USA Network's Golden Globe and Emmy nominated series "Political Animals." She was a scene stealer as the bright, beautiful interior designer whose distress is quietly mounting, as the pressures of life in a family of political animals begin to take their toll. On the film and multimedia front Ishibashi has worked on nearly two dozen projects, some of which were under the direction of Joan Scheckel, Robert Redford and Danny DeVito.

Aside from working in front of the camera, Ishibashi has a passion for producing innovative, engaging content. She launched her production company, Mana Moments, in 2015, which focuses on comedic, female driven content.

When she's not on set, Ishibashi can be found training in Tae Kwon Do, in which she holds a black belt. She also loves to spend time with her family, she currently lives in the Los Angeles area with her husband Jeff and their children, Kai, Lilia and Makena.

ALI LIEBERT



Best known to Hallmark viewers as Darcy Archer in "A Gift to Remember" and "Cherished Memories: A Gift to Remember 2," Ali Liebert also starred in "Cooking with Love" alongside Brett Dalton.

As an award-winning actor, Liebert has over 95 credits in film and television and has moved into directing and executive producing as well. Her most recent acting credits include "Family Law" (Global), "One of Us Is Lying" (NBC

Universal/Peacock), "Van Helsing" (Netflix/Syfy), and the feature film starring Julia Roberts, Wonder (Lionsgate).

Liebert is a Canadian Screen Award winner (Best Actress in a Featured Supporting Role in a Dramatic Series) for her portrayal of Betty Mcrae in Reelz/Global TV's original hit series, "Bomb Girls." She also won a Leo Award for the same character.

Liebert splits her time between Vancouver, Toronto & Los Angeles. She can be found on Instagram and Twitter at @aliliebert.

RYAN SANDS



Multi-talented actor Ryan Sands was most recently seen in the popular Hulu/Disney+ show, "Marvel's Runaways". Executive produced by Josh Schwartz and Stephanie Savage ("Gossip Girl", "The O.C."), "Marvel's Runaways" is the story of six diverse teenagers who can barely stand each other but who must unite against a common foe - their parents. Sands played Geoffrey Wilder, a man defined by the grueling path he's taken to achieve his self-made success. A hulking presence, Geoffrey can effortlessly shift from approachable father to his son, Alex (Rhenzy Feliz), to intimidating strategist. He, along with the other parents, make up the dark and mysterious organization known as The Pride. Critics have applauded the series and have praised the decision by the show creators to focus on the roles of the parents in the series: "The amount of development given to the parents allows them to come across in more than one note, which will only serve to heighten the drama when the inevitable showdown between the Pride and the Runaways occurs" - ComicBook.com.

Although a love for acting and film was apparent at an early age, much of Ryan's time was devoted to a couple of other interests, art and basketball. It wasn't until he saw the film Love Jones while in college, that the acting bug proved too strong to resist.

Ryan began his acting career in his native Washington, DC and soon amassed several television, film and commercial credits. His first big break came with a recurring role on HBO's Emmy Award-winning series "The Wire" as narcotics officer Lloyd 'Truck' Garrick in Sergeant Ellis Carver's (Seth Gilliam) squad in the Western District of the Baltimore Police Department. That role was soon followed by a series regular role as criminal defense attorney, Leroy Barnes on the SpikeTV mini-series "The Kill Point" starring John Leguizamo and Donnie Wahlberg. Sands also had roles in Lee Daniels' directorial debut Shadowboxer and Step Up starring Channing Tatum. Since moving to Los Angeles in 2008, Sands went on to land guest and recurring roles in hit shows such as "ER," "Grimm," "Castle," "Murder in the First," "Scorpion," "Prison Break," and "Free Rein."

Ryan is also an accomplished illustrator and graphic designer. He is skilled at transforming his drawings into unique, one-of-a-kind pieces that often reflect his love for superheroes and sneakers.

LYNDIE GREENWOOD



Lyndie Greenwood was born and raised in Toronto. She studied dance in school and is also well-versed in martial arts. She attended several voice and musical theater schools in Canada. She began acting training at multiple schools including the "Professional Actors Lab", "Jason Fraser Studios", "Etobicoke School of the Arts" and also at "University Settlement Drama Group". She attained a Bachelor of Science degree from the University of Toronto in 2006. Her first role onscreen was in a low-budget Canadian movie called Pinkville. She made her first television debut on an episode of *The Listener*. She made many guest appearances on television such as *Rookie Blue*, *Flashpoint*, *Being Erica*, *Covert Affairs*, *Lost Girl* and *Saving Hope*. She has also appeared in minor roles in short-movies such as *Little Phoenix* and *the Fists of Fury* and as Jen in *The Exit* which she feels was her favorite role. She was also cast in *This Movie Is Broken*. Her career took off in 2011 when she was cast in a recurring role as Sonya on the hit CW's, *Nikita*. for 4 seasons. In 2013, she was cast in a recurring role on FOX's, *Sleepy Hollow* where she stayed until 2017. Since that time this busy actor has been a series regular on Star, *S.W.A.T.* and *The Expanse*.

DEE WALLACE



This attractive, happy go lucky blonde actress, educated at the University of Kansas and a former ballet soloist, first broke into both TV and cinema screens in the mid 1970s and through her appearances in several well remembered horror and sci-fi films, and Dee quickly gained a cult following among the fantasy film fans. Poor Dee always seemed to be on the wrong side of some malevolent person or evil creature....she was pursued by a clan of cannibal killers in *The Hills Have Eyes* (1977), terrorized by a pack of werewolves in the superb *The Howling* (1981), got a break from the horror, as a sympathetic mom in the mega sci-fi hit *E.T. The Extra-Terrestrial* (1982), and nearly ends up lunch for a rabid St. Bernard in the heart stopping *Cujo* (1983).

In the early 1980s, Wallace-Stone actually shared the screen several times with her then husband Christopher Stone before his unfortunate, early demise from a heart attack in October, 1995.

However, typecasting Dee Wallace-Stone as a horror heroine does not do her justice, as unlike some other scream queens whose careers quickly faded, Dee has gone on to have a very busy and varied acting career, appearing in over 90 feature films to date! Her All-American looks and easy going demeanor has seen Dee often cast as a typical suburban mother, a sympathetic friend, or a trusted ally. Fans warm to her endearing smile and natural warmth, and Dee continues to find herself in constant demand in front of the camera, plus she has her own much visited website.

WES BROWN



Wes Brown was born in Fort Worth, Texas, and raised in Baton Rouge, Louisiana, where he attended Louisiana State University. Prior to graduating from LSU, Brown got his big break right in his home state filming the Jerry Bruckheimer-produced 2006 sports drama, “Glory Road,” which shot on location in Southern Louisiana. Soon after, he relocated to Los Angeles and landed another supporting role in the Warner Bros. feature, We Are Marshall, playing actor Ian McShane’s son.

Brown is perhaps best known for his role on HBO’s hit vampire series “True Blood,” in which he played Luke, a former football player with a vengeance against vampires.

Brown also had guest-starring roles on CBS’s “CSI: Miami,” “Criminal Minds,” “NCIS” and “NCIS: New Orleans,” and on ABC’s “Desperate Housewives,” along with recurring roles on the NBC medical drama “Trauma,” The CW’s “90210” and “Hart of Dixie,” and ABC’s “Private Practice” and David Lynch’s “Twin Peaks.” He also portrayed Disney’s legendary Gaston on ABC’s “Once Upon a Time.” Additionally, Brown was a series regular on the Lifetime network’s “Beach Girls,” starring Rob Lowe, as well as on NBC’s “Deception.”

A favorite of Hallmark Channel fans, Brown has starred in the Hallmark Channel original movies “June in January,” “Love Begins,” “Love’s Resounding Courage,” “Shadow on The Mesa,” “Love Under the Stars,” “Christmas Cookies,” “Over the Moon in Love,” “Christmas at Graceland,” “Wedding at Graceland” and most recently, “Sweet Pecan Summer,” based on a story by Brown and for which he served as executive producer

Production Credits

Full Cast

Actors	Role
WES BROWN	Liam
ERIN CAHILL	Charlotte
AVA CARTER	Girl with Santa 1
ISABELLA CARTER	Girl with Santa 2
MAJOR DODGE JR	Young Liam
MARY LAINE DYSTERHOUSE	Young Charlotte
AMIA EDWARDS	Cheery Woman
PRINCESS ELMORE	Julie
LYNDIE GREENWOOD	Maizy
HARPER GRACE HERRIN	Young Nora
JW HUTSON	Mr. Cain Weller
BRITTANY ISHIBASHI	Emily
BART JOHNSON	Robert
ALI LIEBERT	Nora
RITCHIE MONTGOMERY	Captain Ron/Santa

MAURY MORGAN
RYAN SANDS
SUMMER SELBY
K STEELE
CLAIRE TARANTO
DEE WALLACE
JESSICA WILKINSON

Allison
Paul
Miss Gloria
Celeste
Young Emily
Donna
Cathie Brendel

Casting by

Penny Perry

Original music by

Andrew Morgan Smith

Production Designer

Peter Kelly

Costume Designer

Anna K. Findlay

Edited by

Misty Talley

Director of Photography

Newton TerMeer

Written by

Audrey Shulman

Directed by

Maclain Nelson

Full Crew

DANIEL LEWIS

UPM

MARK GREENE

Assistant Director

LAURA MCKINSEY

Second Assistant Director

KYLIE ARCENEUX

Second Second Assistant Director

MICHAEL KERN

Financial Controller

ANGELA POLK

Executives in Charge of Production

EMILY MERLIN

MATTHEW MORGAN, CSA

Local Casting by

DES MATELSKE

Production Coordinator

HENRY DIVECCHIO

Office PA

BRANDY PERDIKIS

Production Accountant

REBECCA CATHEY	Key Set Production Assistant
CASSIDY MARSH	First Team PA
BRIANNA TWILLEY	Basecamp PA
TYLER LINDSEY	Set PA
TODD GIBSON	Set PA
JEAN-LUC CHARBONEAU	Cast PA
NEWTON TERMEER	Director of Photography
DAVID MCGILL	A Camera Operator
BRIAN AICHLMAYR	A Camera 1st Assistant Camera
ANDRES QUINTERO	A Camera 2nd Assistant Camera
ELIOT BRASSEAU	B Camera Operator
HUNTER THOMAS	B Camera 1st Assistant Camera
JOURDAN BAZLEY	B Camera 2nd Assistant Camera
J.M. STELLY	Digital Intermediate Technician
TYLER LAPEROUSE	Camera Utility
ELIOT BRASSEAU	Drone Operator
SUSAN MCGILL	Script Supervisor
ROB SMITH	Production Sound Mixer
MATT CHAMPAGNE	Boom Operator
ANNA K. FINDLAY	Costume Designer
STOREY WILSON	Costume Supervisor
AUDREY NELSON	Set Costumer
DEBBIE BAIRNSFATHER	Wardrobe Intern
DESHA MARTIN	Make-Up Department Head
KAELAH CAREW	Key Make-Up
JANE HASSINGER	Hair Department Head
JESSICA DOBSON	Key Hair
SERGIO A. VILLEGAS	Gaffer
BRYAN FREED	Best Boy Electric
KAYLA ADAMS	Set Lighting Technician
AMANDA "MANDI" WOODS	Electrician
MIKEY KRAMER	Electrician
MEL PERDIKIS	Key Grip
TREVOR ELLIS	Best Boy Grip
GEORGE FAUNTLEROY	Dolly Grip
JARRED HARRELL	Company Grip
TY LANDRY	Company Grip
FERNANDO ALBANO	Company Grip

PETER KELLY	Production Designer
BIA GALLO	Set Decorator
RICHIE BANKS	Leadman
MICHAEL YORI	On Set Dresser
TONY PAULLEY	Prop Master
THE KITCHEN/GREG EVERHART	Catering
ROLLING RIVER/ROBBIE FRUGE	Additional Catering
ROLLING RIVER/ROBBIE FRUGE	Craft Services
VICKI J. NETTERVILLE	Set Medic
LAFIETT "LALA" MALLET	Covid Compliance Officer
DARRICK LEWIS JR	Covid PA
SGT JONES	Security
JOSIAH KENNEDY	Extras Casting
KAOLIN BASS	Locations Manager
SCOTT HANSON	Locations Manager
KERRY KICKS	Locations Scout
DAVIS SHARP	Locations PA
ALBERT LANDRY	Transportation Captain
OSCAR BEGUIRISTAIN	Transportation Coordinator
BRAD SMITH	Drivers
NALLA BLACK	
WILBERT PREVOST	
RANDY BAILY	
TIM MORRIS	
MISTY TALLEY	Post Production Supervisor
MISTY TALLEY	Editor
SHENA MULLINS	Assistant Editor
ALEXANDER WILTZ	Visual Effects by
CENTRAL POST L.A.	Post Production Services
STEPHEN DERUGUIAN	Supervising Colorist
DILLON BROWN	Online Editor
LUIS FERREIRA DE CASTRO / POINT OF BLUE	ADR Recording Studios
AMY HOLOMAKOFF / FACTORY UNDERGROUND	
SEAN KELMAN / POST MODERN SOUND	
POINT OF BLUE STUDIOS	Post Production Sound Services
W. ALEX REVES	Supervising Sound Editor/Sound Re-Recording
BILL CAPOSSELA	Dialog Editor
STEVE WALTER	Foley Artist

MARK MCBRYDE
LUIS FERREIRA DE CASTRO
ROBERT TROY
ANDREW MORGAN SMITH
DAN NEGOVAN
CAITLIN SMITH
KRISTEN DUBAR
HOLLYWOOD SCRIPT RESEARCH
EVERGREEN FILMS
GEAR UP GRIPS
CINELEASE
SERGIO A. VILLEGAS
MBS EQUIPMENT
CHAPMAN LEONARD
KESLOW CAMERA
ROBERT WISE
MERIT HEALTH
CAPSTONE
CAST & CREW
TIM FITZPATRICK
THE CHRISTMAS DEPOT

Foley Editor
Background Editor
Audio Post Producer
Composer
Music Editor
Nora Vocal Double
Emily Vocal Double
Script Clearance
Production Services
Grip and Electric Equipment

Dolly
Camera Equipment
Set Dressing
Covid Tests
Insurance
Payroll Services
Christmas Decorations

SPECIAL THANKS

REBECCA LEWIS
DYLAN PRICE
AVERY LEWIS
SULLIVAN LEWIS
OLIVIA LEWIS
REUBEN LIBER
ERIC DAVIES
LYNETTE MYERS
GOVERNOR TATE REEVES
NINA PARIKH
BETTY BLACK
THABI MOYO
SALLY WILLIAMS
SAM PORTERA
PHILLIP GRIFFIN
JOHN NORRIS

VISIT NATCHEZ
NATCHEZ CHAMBER OF COMMERCE
KEN & SARAH LAIRD
DEANNA KIMBRO
JAKI ROBINSON
HOME BANK
MICHAEL HICKS
AMERICAN QUEEN STEAMBOAT COMPANY
WARREN & NANCY REUTHER
JENNI GUIDO
MONMOUTH HISTORIC INN & GARDENS
WALTER TIPTON
THE NATCHEZ GRAND HOTEL
KEVIN PRESTON
VALDA HARVESTON
MAGNOLIA BLUFF CASINO HOTEL

TATE TAYLOR
BEN FUQUA
CLETA ELLINGTON
CROOKED LETTER PICTURE COMPANY
BEAU DESHOTEL
KERRY DICKS
STRATTON HALL
REGINA CHARBONEAU
MAYOR DAN GIBSON
THE RESIDENTS OF NATCHEZ, MS
GARETT MAY
ANGELA YATES
JAMES BROWN
DELTA BANK
TOMMY POLK
MARTIE HOOVER
GAY AUSTIN
DEVIN & JANICE HEATH
VISIT NATCHEZ
NATCHEZ CHAMBER OF COMMERCE
KEN & SARAH LAIRD
DEANNA KIMBRO
JAKI ROBINSON
HOME BANK
MICHAEL HICKS
AMERICAN QUEEN STEAMBOAT COMPANY
WARREN & NANCY REUTHER
JENNI GUIDO
MONMOUTH HISTORIC INN & GARDENS
WALTER TIPTON
THE NATCHEZ GRAND HOTEL
KEVIN PRESTON
VALDA HARVESTON
MAGNOLIA BLUFF CASINO HOTEL
SILVER STREET BOUTIQUE
THE KITCHEN RESTAURANT
GREG EVERHART
ENTERPRISE RENT CARS

SILVER STREET BOUTIQUE
THE KITCHEN RESTAURANT
GREG EVERHART
ENTERPRISE RENT CARS
BUTTER CAKERY
THE LITTLE EASY
SMOOTS
SOUND HARD
LONGWOOD
ADAMS COUNTY COURTHOUSE
NATCHEZ COFFEE
TIM FITZPATRICK
THE CHRISTMAS DEPOT
CHRISTMAS IN NATCHEZ
THE LAW OFFICES OF DENNIS ANGEL
THE STATE OF MISSISSIPPI
NATCHEZ POLICE DEPARTMENT
NATCHEZ FIRE DEPARTMENT

BUTTER CAKERY
THE LITTLE EASY
SMOOTS
SOUND HARD
LONGWOOD
ADAMS COUNTY COURTHOUSE
NATCHEZ COFFEE
TIM FITZPATRICK
THE CHRISTMAS DEPOT
CHRISTMAS IN NATCHEZ
THE LAW OFFICES OF DENNIS ANGEL
THE STATE OF MISSISSIPPI
NATCHEZ POLICE DEPARTMENT
NATCHEZ FIRE DEPARTMENT

SONGS

Deck the Halls
Arranged by Eleisha Eagle and Erik Kertes
Performed by Eleisha Eagle
Courtesy of Eleisha Eagle and Baby Fish Mouth Music

Hey Ho Holiday
Written by Paul Freeman
Performance by The 100 Year War
Courtesy of Paul James Freeman - BMI

This Year
Written by Maria Schafer
Performed by Maria Schafer and Tony Guerrero
Courtesy of Maria Schafer

Christmas Valentine
Written by Stephen Rees
Performed by Stephen Rees
Courtesy of Fiddle Always Wins

Jangle Bells
Arranged by Andrew Morgan Smith
Performed by Andrew Morgan Smith
Courtesy of Andrew Morgan Smith Music

Natchez Christmas Eve
Written by Wes Brown
Performed by Wes Brown
Courtesy of Island House Ent.

Brings Me Back
Written by Maria Schafer and Shane Savala
Performed by Maria Schafer and Shane Savala
Courtesy of Marsch Music

Jingle Bells
Written by Jake Spinella
Performed by Jake Spinella
Courtsey of Jake Spinella Music

Silent Night
Written by Jake Spinella
Performed by Jake Spinella
Courtsey of Jake Spinella Music

Angels We Have Heard on High
Arranged by Andrew Morgan Smith
Performed by Andrew Morgan Smith
Courtesy of Andrew Morgan Smith Music

Hark the Herald
Arranged by Jake Spinella
Performed by Jake Spinella
Courtesy of Jake Spinella Music

O Little Town of Bethlehem
Arranged by Andrew Morgan Smith
Performed by Andrew Morgan Smith
Courtesy of Andrew Morgan Smith Music

Mellow Bells
Written by Andrew Morgan Smith
Performed by Andrew Morgan Smith and the
Lifetimers
Courtesy of Andrew Morgan Smith Music

12 Days of Christmas
Written by Andrew Morgan Smith
Performed by Andrew Morgan Smith and the
Lifetimers
Courtesy of Andrew Morgan Smith Music

I Saw Three Ships
Arranged by Kevin Granger
Performed by Kevin Granger
Courtesy of Mas Donkey Publishing

Silent Night
Arranged by Kevin Granger
Performed by Kevin Granger
Courtesy of Mas Donkey Publishing

Greensleeves
Arranged by Kevin Granger
Performed by Kevin Granger
Courtesy of Mas Donkey Publishing

Mark the Halls
Written by Andrew Morgan Smith
Performed by Andrew Morgan Smith and the
Lifetimers
Courtesy of Andrew Morgan Smith Music

Deck the Country Halls
Arranged by Andrew Morgan Smith
Performed by Andrew Morgan Smith
Courtesy of Andrew Morgan Smith Music

Producer Biographies

TIM JOHNSON – Executive Producer

Tim Johnson is among the most active and reliable producers in the business thanks to top rate productions and global distribution appeal.

Johnson is also responsible for producing the international hit series, DR. QUINN, MEDICINE WOMAN for CBS for over 5 seasons. During his 100-episode tenure, he also developed and produced the original docu-drama COLD CASE for CBS network, which was the very first program to integrate television with the Internet.

Johnson has produced over 150 movies, 15 globally released series for every major US network - including ABC, Disney, CBS, NBC, Netflix, FOX and Sony.

JOHNSON PRODUCTION GROUP

The Johnson Production Group contracts globally to produce television content for international networks, studios and distributors. Based in Los Angeles and Vancouver, British Columbia, the company

manages production, facilitates development and financing, procures distribution and guarantees quality and timely execution of its programs. While costs have gone up, so has the demand for quality. No longer is good enough, good enough. Johnson Production Group serves that segment when a show needs to be "A" quality, but produced efficiently enough to meet a locked budget. JPG specializes in value, protection of creative elements, and delivery of a quality finished product.

DANIEL LEWIS - Producer

Daniel Lewis is the Chief Operating Officer for Active Entertainment. Mr. Lewis is a graduate of Louisiana State University. After departing from his position at JPMorgan Chase in 2004, Lewis has been involved in over 40 projects while also assisting in the infrastructure growth of the Louisiana's budding film industry. In early 2009, Lewis brought his experience to Active Entertainment's Louisiana studio operation. Since his arrival, the company has continued to see consistent growth and has hired many very talented and experienced production and post-production personnel. In addition to serving as the company's COO, he has produced a significant number of projects for Active Entertainment.

ALYS MURRAY - Co-Producer

Alys Murray is a three-time international bestselling author and screenwriter. Her debut novel, THE CHRISTMAS COMPANY, was Hallmark Publishing's first original Christmas novel, and her debut screenplay, CHRISTMAS IN LOUISIANA, was one of Lifetime's biggest hits of the year. The first three books of her MAGNOLIA SISTERS book series all hit international best seller lists. Originally from New Orleans, Louisiana, she focuses on romantic genre fare.

MISTY TALLEY - Co-Producer

Misty Talley went to see Jurassic Park at the age of 9; she went into the theater wanting to be a Paleontologist and came out wanting to be a filmmaker. As director and editor, Misty Talley is a master storyteller. Misty has edited over 20 films.

She started out her career as an assistant editor for Sweet Post working on assembling films for the SyFy Channel, Lifetime Networks, and foreign markets. While climbing the editorial ranks Misty directed her own short films including Soup's On and Ten to Sing.

Misty has an eye for detail. Her editing background has created a directing mindset to analyze every detail, and have purpose behind it before the footage ever makes it to the editing room. Misty became the first female director of a SyFy original film with her feature debut Zombie Shark. Since then she has been steadily working on developing her own content, while continuing to direct documentaries and monster movies.

Billing Block

Johnson Production Group Presents "EVERY TIME A BELL RINGS"
starring **ERIN CAHILL BRITTANY ISHIBASHI ALI LIEBERT RYAN SANDS LYNDIE GREENWOOD RITCHIE MONTGOMERY BART JOHNSON HAILEY SMITH** with **DEE WALLACE** and **WES BROWN** Casting by **PENNY PERRY** Original music by **ANDREW MORGAN SMITH** Production Designer **PETER KELLY** Costume Designer **ANNA K. FINDLAY** Edited by **MISTY TALLEY** Director of Photography **NEWTON TERMEER** Executive Producers **J.R. "RICK" CARTER TIMOTHY O. JOHNSON** Produced by **DANIEL LEWIS ERIN CAHILL** Co-Producers **ALYS MURRAY MISTY TALLEY** Written by **AUDREY SHULMAN** Directed by **MACLAIN NELSON**



© MMXXI GARLAND PRODUCTIONS, LLC All Rights Reserved

Meta Data

LONG (max 3000 characters) synopsis

Charlotte, Emily and Nora are sisters who reunite in their hometown of Natchez, Mississippi at Christmas after a long time apart, and their mother Donna couldn't be happier to have them home for the holiday. Longtime friend Liam is also glad to see the sisters back in town, especially Charlotte. The trio is surprised to discover their late father had planned one last scavenger hunt for them to find their family's wooden wishing bell, which was a beloved, annual holiday tradition when they were young. Charlotte, Emily and Nora's search for clues in the days leading up to Christmas, takes them to childhood haunts around Natchez that hold special meaning for them. In the process, their sisterly bond is rekindled and each learns an important lesson about what they want in life and in love. (799)

MEDIUM (max 500) synopsis

Three sisters reunite in their hometown of Natchez and discover their late father planned one last scavenger hunt for them to find the family's wishing bell - an annual holiday tradition. As they search for clues their bond is rekindled and they find hope and healing. (268)

SHORT (max 100 characters) synopsis

Three sisters reunite for a scavenger hunt, their bond is rekindled and they find hope and healing. (99)

5 KEY WORDS

Christmas, family, estrangement, sisters, romance