

IN LOVE WITH MY PARTNER'S WIFE

Johnson Production Group Press Kit

One-Liner

A police detective defends his abusive partner's wife and gets framed for murder.

Synopsis

When detective Paul Ford discovers his partner, Frank, is abusing his wife Eve, Paul steps in to rescue her, but a vengeful Frank frames him for a murder. With Paul on the run from his fellow officers and Eve on the run from her husband, the two find themselves escaping into a heated love affair.

Producers

Executive Producers
TIMOTHY O. JOHNSON
JOSEPH WILKA

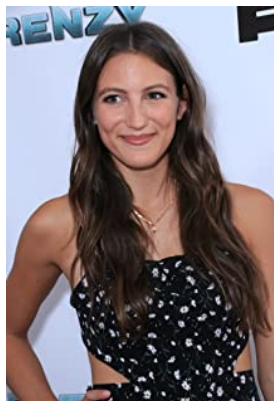
Producer
A.J. KELLY

Key Cast

<u>CHARACTER</u>	<u>ACTOR</u>
Eve Miller	GINA VITORI
Paul Ford	ANDREW SPACH
Frank Miller	JONATHAN STODDARD
Andrea Billings	ISABELLA OLIVEIRA
Captain Anderson	NICOLE PULLIAM

Key Cast Biographies

GINA VITORI



Originating from the Island that is Long in NY, Gina officially moved to Manhattan to pursue her dream at New York University's Tisch School of the Arts. After training with incredible teachers and fellow actors at the Atlantic Acting School and Stonestreet Studios, she received her BFA in Acting. (Then Lesly Kahn told her to forget everything she knows about acting, and UCB taught her to 'yes and'). She now lives in sunny Los Angeles, where she spends her days on screen battling sharks and stalkers, and off screen surfing and training Martial Arts.

Gina is known for her starring roles in the original SyFy movie, 'Frenzy', as well as becoming a bit of a 'Lifetime' leading lady - most recently in 'Deadly Girls Night Out'. She can also be seen co-starring on '9-1-1' on FOX, and 'The Affair' on Showtime. Other fun roles include a Lara Croft knockoff, alcoholic farmer, and a singing mermaid for a live 2000 seat audience in Alaska.

ANDREW SPACH



Andrew Spach is an American actor. He is a graduate of the Meisner Technique Studio in San Francisco where he studied with Jim Jarrett (Sanford Meisner's last teaching protégé) along with Melissa Thompson Esaia. He also studied more recently with Steve Eastin in Los Angeles.

Andrew is known for his work in An Organized Killer, General Hospital and the upcoming Angels of Mercy. He now resides in Los Angeles, CA.

JONATHAN STODDARD



Jonathan Stoddard started his acting career on the stage performing dramatic and musical theater portraying such roles as the Emcee in Cabaret and Tony in West Side Story. He has starred in over 30 feature films such as SOMEWHERE IN MONTANA, FURRY LITTLE CHRISTMAS and Hallmark's ROME IN LOVE, and television shows, including Showtime's "Black Monday Season 2" and CBS's Daytime Drama "The Young and the Restless" for 3 years.

Jonathan has an additional 10+ feature films releasing in 2022 and 2023 from Rom-Coms to Suspense to Supernatural Horror to Classic Comedies, so get ready to see him everywhere!

Jonathan is also an accomplished singer/songwriter with multiple industry cuts and hit songs.

ISABELLA OLIVEIRA



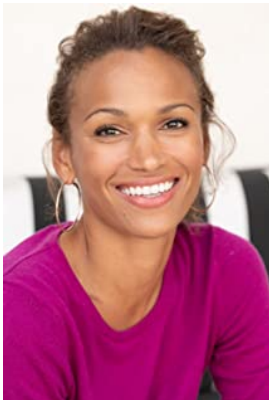
Isabella Oliveira was born in Brasil and raised in LA with Jazz legend, Wayne Shorter, as an uncle, and a family of larger than life producers of the first Los Angeles Brazilian Carnival. Her first performance was at age 8, dancing the Samba at the Hollywood Palladium.

She began her professional career at 11, after being discovered by an agent at a showcase, and auditioned for film and television through her formative years. She eventually attended the Los Angeles County High School for the Arts. There, she was able to fully delve into her love of the art of acting; training in Shakespeare, Suzuki/Viewpoints, Physical Theatre, and Directing.

Upon graduating high school, she trained with renowned theatre director Jon Jory before moving to New York to attend the New School for Drama. There she honed her craft, writing, directing and performing with Manhattan Theatre Repertory, Bank Street Theatre, and theatre director Sherri Eden Barber. She has performed at the largest theatre festival in the world at Edinburgh Fringe Festival in Scotland, as well as Shakespeare Theatre LA.

She now lives in Los Angeles, where she continues to dance to Brazilian music, hone her craft, and is committed to the representation of POC in film and television behind and in front of the camera.

NICOLE PULLIAM



Born and raised in Columbus, Ohio, Nicole knew from a very young age that she wanted to pursue a career as a performer. To that end, she participated in several school productions while growing up, and completed numerous acting classes throughout her life. She started out slowly by taking on modeling and commercial gigs in her native Ohio, and eventually worked up the courage to move out to Hollywood. Living bi-coastal between NYC and LA, Nicole began the tedious process of auditioning. She quickly landed small roles in films and television and has been a working actress ever since.

Production Credits

Full Cast

Actors	Role
GINA VITORI	Eve Miller
ANDREW SPACH	Paul Ford
JONATHAN STODDARD	Frank Miller

ISABELLA OLIVEIRA
NICOLE PULLIAM
CORBIN TIMBROOK
JOHNNY DINAN
ROBERT MILLER
JACOB HORN

Andrea Billings
Captain Anderson
Callaghan
Jeffrey
Brian
Pizza Guy

Casting By

JEFF HARDWICK CSA

Production Designer

ROBERT WISE

Director of Photography

NICK ALBERT

Edited By

THIJS BAZELMANS

Music By

ANDREW SKRABUTENAS

Line Producer

JACOB HORN

Written By

PAULA RAHN

Directed By

LINDSAY HARTLEY

Other Crew

AMANDA SEARS	Production Coordinator
MARIETTA VOLYNKA	Location Manager
TEMPEST MONTGOMERY	1st Assistant Director
MELODI TUNA	2nd Assistant Director
TYLER DUVAL	Additional 2nd Assistant Director
MIKE ESCAMILLA	Stunt Coordinator
KARIM PHELPS	Stunt Co-Coordinator
ERIC ENROTH	Sound Mixer
CHRISTOPHER ADAM HRUBY	Additional Sound Mixer
DREW FRANZBLAU	Boom Operator
ROBERT WISE	Production Designer

NOEL MAGNUSSON	Prop Master
TONY PAULLEY	Prop Master
ASHLEY BAKER	Art Director
FRED MANCHENTO	Graphics
NATHAN MEADE	Steadicam Operator
JONATHAN WANG	Second Camera Operator
GEORGE ELLETT	1st Assistant Camera
NATE JONES	Additional 1st Assistant Cameras
HARRISON WAYNE	
JACOB LALLAS	BCAM 1st Assistant Camera
LENA LEE	Additional BCAM 1st Assistant Camera
AMY FRYE	2nd Assistant Camera
JUSTIN HARTSAW	Additional 2nd Assistant Cameras
AUSTIN WEBSTER	
MAURICE SALLAVE	Drone Operators
AUSTIN AHLBORG	
PETE AGUIRRE	Media Manager
KEN SAX	Stills Photographer
JEFF MARLOWE	Gaffer
ANDREW CHOE	Best Boy Electric
SCOTT SUMMERS	Additional Best Boy Electrics
DEVIN CONNER	
WADE PATTERSON	Electrics
XAVIER DUBOSE	
PETER G HOWELL	Key Grip
SERGIO NAVA	Best Boy Grip
JOSHUA TOLON	Dolly Grip
KINGSLEY COSTIN	Additional Dolly Grips
JACKSON RICHARDSON	
KESHIA SMITH	Key Make-Up Artist
DANIELLE LOUISE	Make-up Artist
CORTNEY WATSON	Key Hair Stylist
JAYNE SEWARD	Costume Designer
ADRIENNE REISHUS	Wardrobe Assistant
MARILYN MILLER	Script Supervisor
GREG SABA	Production Assistants
KAT NOLTE	
BROOKE SHARLAND	

ARIES LOUIZIA
STEVE RODGERS
CHIJIJOKEAKUJUOBI
RICHMOND KEELING
TRAVIS LOWE
ERIK TROY

Producer Biographies

TIM JOHNSON – Executive Producer

Tim Johnson is among the most active and reliable producers in the business thanks to top rate productions and global distribution appeal.

Johnson is also responsible for producing the international hit series, DR. QUINN, MEDICINE WOMAN for CBS for over 5 seasons. During his 100-episode tenure, he also developed and produced the original docu-drama COLD CASE for CBS network, which was the very first program to integrate television with the Internet.

Johnson has produced over 150 movies, 15 globally released series for every major US network - including ABC, Disney, CBS, NBC, Netflix, FOX and Sony.

JOHNSON PRODUCTION GROUP

The Johnson Production Group contracts globally to produce television content for international networks, studios and distributors. Based in Los Angeles and Vancouver, British Columbia, the company manages production, facilitates development and financing, procures distribution and guarantees quality and timely execution of its programs. While costs have gone up, so has the demand for quality. No longer is good enough, good enough. Johnson Production Group serves that segment when a show needs to be "A" quality, but produced efficiently enough to meet a locked budget. JPG specializes in value, protection of creative elements, and delivery of a quality finished product.

JOSEPH WILKA – Co-Executive Producer

Joseph Wilka is the Head of Production for Johnson Production Group. Los Angeles-based, Joseph had already produced and directed several feature films before serving as the senior marketing executive for Gravitass Ventures. While at Gravitass, Wilka helped pioneer new distribution models for independent films including day-and-date theatrical releases. It was also at Gravitass where Joseph first worked with Johnson Production Group to facilitate the release of their films to the worldwide Video On Demand audience. After serving as the Director of Distribution and Production for Viva Pictures, where he produced English-language versions of foreign animated titles for DirecTV, Wilka officially joined Johnson Production Group. As Head of Production, he oversees the development, production, and distribution of films from multiple production units for release on broadcast and streaming platforms.

A.J. KELLY – Producer

Producer and co-founder of the creative production company, Goodform, A.J. Kelly has spent the past decade creating film, television, documentary, experiential and branded content. His work has won awards at top festivals including Cannes & SXSW, aired on premium networks and received multi-cultural acclaim.

Based in Los Angeles, A.J. believes in elevating content from diverse creative voices and providing an outlet for filmmakers to bring their stories to life.

Billing Block

Johnson Production Group Presents with Lifetime “IN LOVE WITH MY PARTNER’S WIFE”
starring GINA VITORI ANDREW SPACH JONATHAN STODDARD ISABELLA OLIVEIRA
NICOLE PULLIAM Casting By JEFF HARDWICK CSA Production Designer ROBERT WISE
Director of Photography NICK ALBERT Edited By THIJS BAZELMANS Music By ANDREW
SKRABUTENAS Executive Producers TIMOTHY O. JOHNSON JOSEPH WILKA
Produced by A.J. KELLY Line Producer JACOB HORN Written By PAULA RAHN
Directed By LINDSAY HARTLEY

© MMXX Johnson Production Group Inc. All Rights Reserved



Lifetime

Meta Data

LONG (max 3000 characters) synopsis

When detective Paul Ford discovers his partner, Frank, is abusing his wife Eve, Paul steps in to rescue her, but a vengeful Frank frames him for a murder. With Paul on the run from his fellow officers and Eve on the run from her husband, the two find themselves escaping into a heated love affair. (298)

MEDIUM (max 500) synopsis

When detective Paul Ford discovers his partner, Frank, is abusing his wife Eve, Paul steps in to rescue her, but a vengeful Frank frames him for a murder. With Paul on the run from his fellow officers and Eve on the run from her husband, the two find themselves escaping into a heated love affair. (298)

SHORT (max 100 characters) synopsis

A police detective defends his abusive partner's wife and gets framed for murder. (81)

5 KEY WORDS

Police, detective, abusive, romance, murder